



# SERVICE TECH, INC.

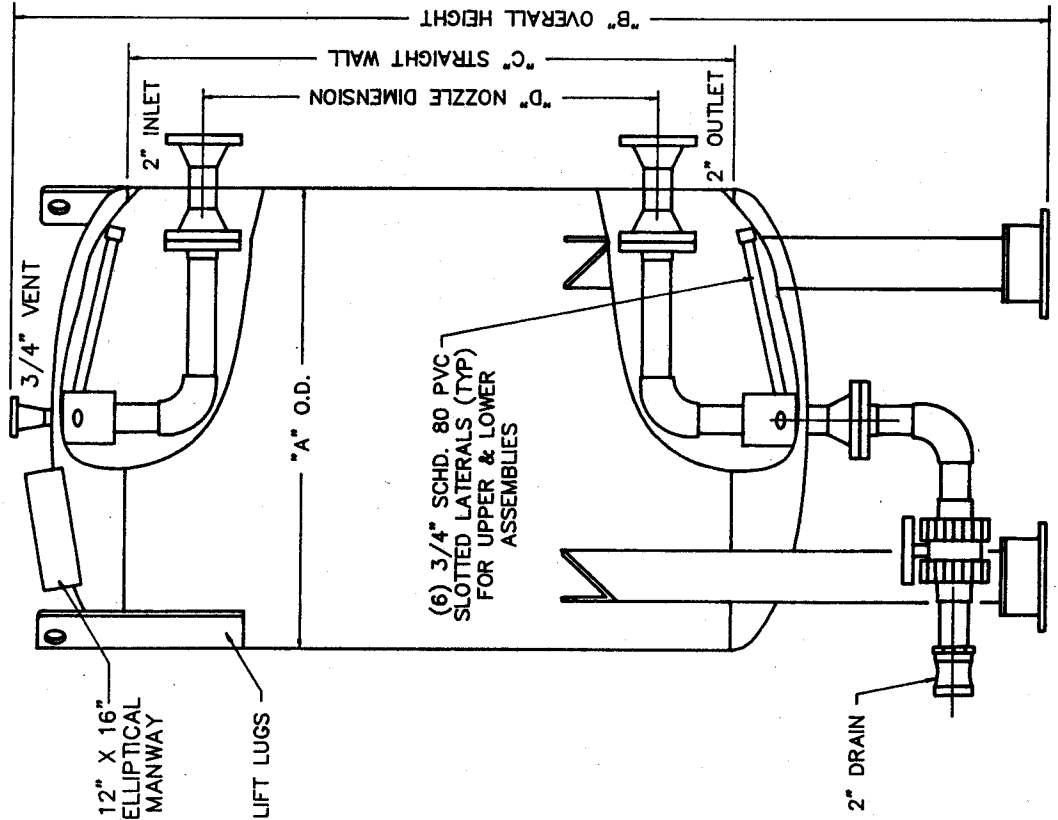
Activated Carbon Engineering, Sales and Service

Service Tech, Inc. has a complete line of high pressure liquid granular activated carbon (GAC) adsorbers. The LIQUIDCLEAN (LC) ADSORBERS are designed for clients who need a low cost, high pressure unit that is portable and efficient. These units are designed for a maximum pressure of 100 PSI and are available in sizes from 500 pounds to 2000 pounds that can handle flow rates ranging from 20 gpm to 75 gpm.

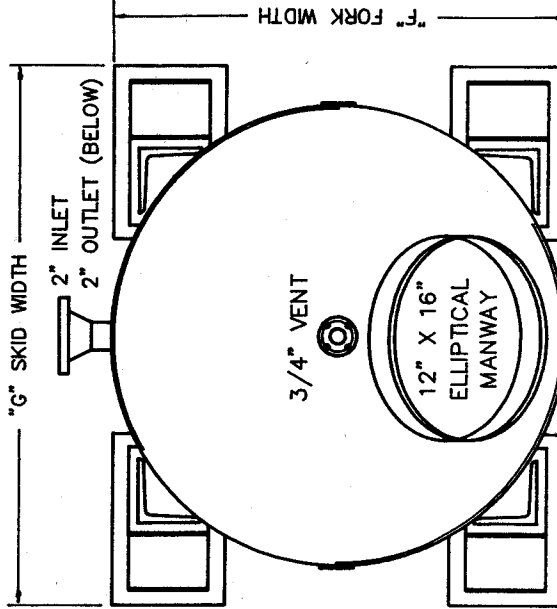
**SPECIFICATIONS:**

- Epoxy line poly steel construction
- 100 PSI @ 150F design
- Fork channels and lifting lugs
- Bottom PVC distributor system to eliminate channelling
- Upper PVC distributor system for backwashing and up-flow operation
- 12" x 16" Elliptical manway
- 2" inlet / outlet
- 2" carbon transfer line

## LIQUIDCLEAN LC SERIES 100 psi LIQUID ADSORBERS



ELEVATION VIEW DIM'S ONLY  
SCALE : NONE



ORIENTATION PLAN  
SCALE : NONE

MODEL NAME	CARBON CAPACITY*	"A" DIM	"B" DIM	"C" DIM	"D" DIM	"E" DIM	"F" DIM	"G" DIM	GPM NORM/ MAX**
LC-500	18 ft <sup>3</sup> (500#)	30"	78"	48"	36"	31.75"	37"	20	
LC-750	27 ft <sup>3</sup> (750#)	36"	78"	48"	36"	36"	41.375"	30	
LC-1000	35 ft <sup>3</sup> (1000#)	36"	99"	72"	60"	36"	41.375"	30/40	
LC-1500	54 ft <sup>3</sup> (1500#)	48"	99"	72"	60"	48"	48"	50	
LC-2000	72 ft <sup>3</sup> (2000#)	48"	99"	72"	60"	48"	48"	50/75	

\* ESTIMATED GAC WEIGHT IS BASED UPON BITUMINOUS COAL PRODUCT  
 \*\* FLOWRATES BASED ON EQUIPMENT LIMITS, CONTACT SERVICE TECH, INC.'S TECHNICAL REPRESENTATIVES FOR OPERATIONAL ESTIMATES ON YOUR PROCESS STREAM.  
 SERVICE TECH CAN PROVIDE ON-SITE CHANGEOUT SERVICES TO ANY ADSORPTION SYSTEMS.